

SP series operation guide

1. Scan QR code to download RCS APP



2. Account Registration:

To register an account, you must use an email address. Typically, you need to fill in the agent code. If you don't have one, input the default code.



3.Reset the inverter WIFI

3.1 Press and hold the enter key for three seconds



3.2 Press the UP key to switch to parameter 37



3.3 Press ENTER to select parameter 37



3.4 press UP or DOWN key to switch parameter



3.5 changed parameter to **37. f5e** then press ENTER key to save it



4.APP connect guide

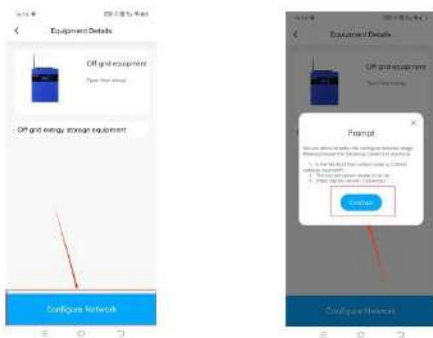
4.1.Open RCS APP then enter account and password to log in



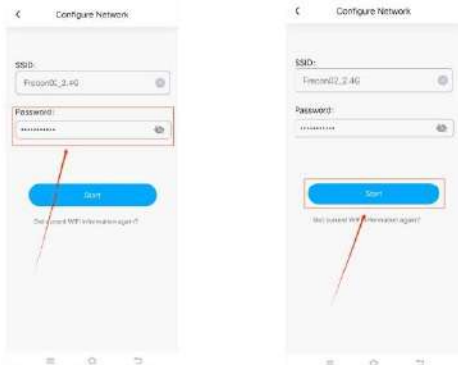
4.2 Click on list and select off grid equipment



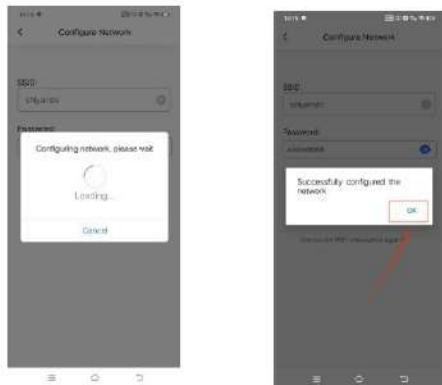
4.3 Click Configure Network and then click Continue



4.4 Enter the WIFI password and click start



4.5 Wait for the connection to complete and click OK after the connection is completed.



4.6 After the connection is completed, you can click the inverter icon to monitor and modify the inverter parameters.

