

WIFI/4G camera solar street light



- a. All in one design,light weight
- b. Infrared human body sensor with timer
- c. Super-long lighting time, backup for more than 10 rainy days
- d. Green power, energy-saving and Eco-friendly
- e. Easy installation,Long service life, free maintenance
- f. Camera visual distance 20-30M, each 5 days self-clearance and recording
- g. 32G TF card
- h. Available to check recorded videos/images on your mobile and table PC

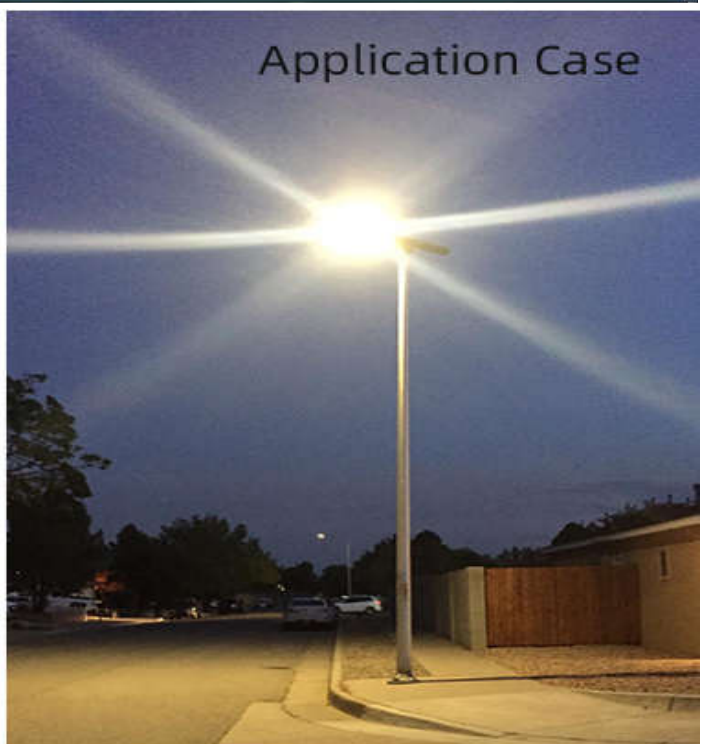
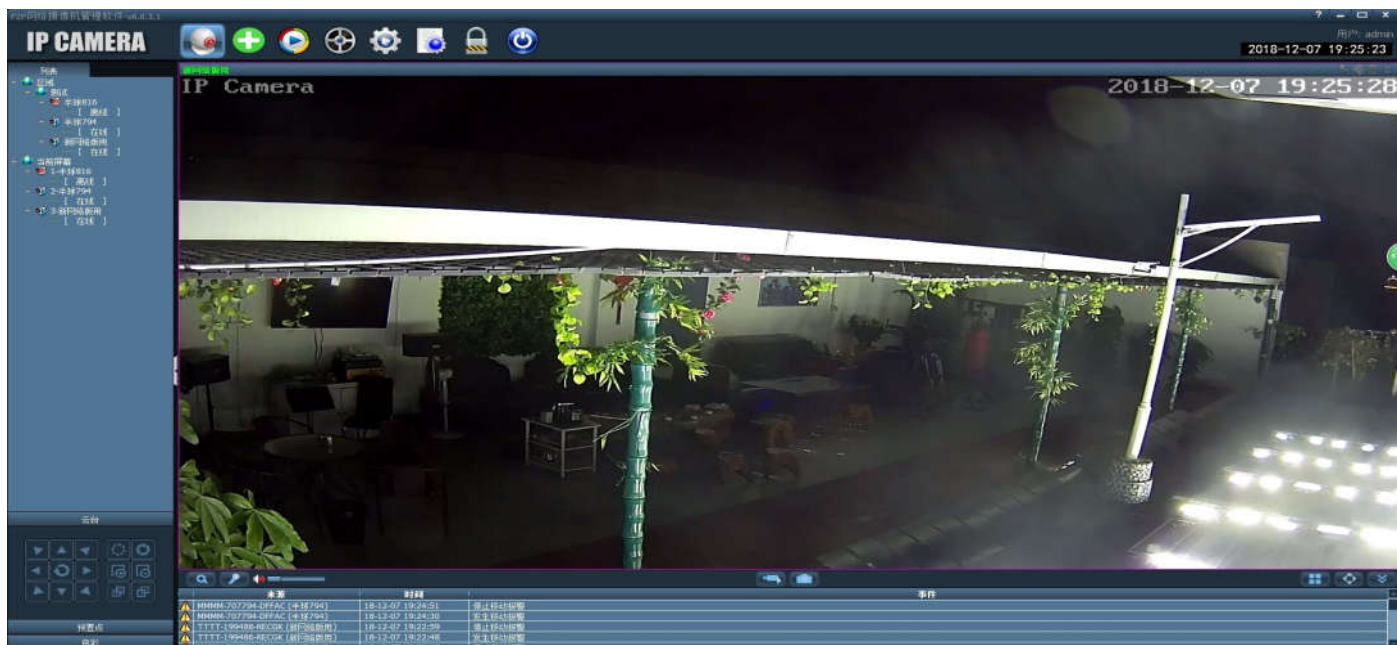
Brief Introduction to This Webcamera

1. SONY 2.1 megapixel, 3 megapixel hd lens, built-in WIFI hotspot, built-in card support, maximum support for 128G memory card, built-in IRCUT, no color bias during the day, clearer at night.P2P technology, plug and play. Embedded RTOS design, dual-core 32-bit DSP, pure hard compression, watchdog
2. Video processing h. 264/ h. 265 video coding, support dual stream, AVI format. Support code stream 0.1m ~6Mbps adjustable. Support frame rate 1~30 frames/second adjustable
3. Image output main code stream : 1920*1080, Substream : 704 * 576
4. Network interface 1 RJ45 Ethernet interface, 10/100m adaptive. Support ONVIF protocol RTSP/FTP/PPPOE/DHCP/DDNS /NTP/ UPnP network protocol
5. Business functions support WEB configuration, support OSD, support real-time video transmission, support motion detection, support center reminder and screen pop-up linkage after motion detection and alarm. Support JPEG image capture. Support unified client remote monitoring software, MYEYE platform and other system applications
6. Mobile monitoring supports Mobile monitoring (iPhone, Windows Mobile, BlackBerry, Symbian, Android)

Webcamera Main Technical Data

Product Name	Sony AC-HX-P210Q25 210MP HD Webcam
Connection	WIFI
PL Mount	300MP
SD Card	Default 32G, Max support 128G
Power	3.5W
Day Night Switch	Auto
Minimum Illumination	0.01Lux(IR ON)
Sensitivity	1.0V/Lux-sec(550nm)
SNR	≥48dB
Dimension	Φ105*82mm
Electronic Shutter	SES ON:1/50-1/100, 000S
Visual Range	20-30M
Optical Lens	3.6mm,6mm,8mm
Resolution	1920*1080; 704 * 576
Max Framerate	25FPS; 1920*1080
Data Rate	21Kbps-8Mbps
Video Output	1 way video output
Product compatibility	Onvif protocol, a global protocol standard
Intelligent Alarm	Intelligent video and alarm input trigger
Dual-stream	Support
Security	Password protection, administrator rights Settings
Network Protocol	TCP,UDP,IP,HTTP,DHCP,RTP,RTSP,FTP,SMTP,DNS SMTP,DDNS,NTP,ICMP,SIP
Operating temperature/humidity	Temperature: -25°~65° humidity: 10-90% relative humidity (no condensation)

1. This camera can be operated on both Phone (Android/Iphone) and Table PC.
2. Mobile please search APP name CamHi from Google Play or APP Store to download. Table PC please ask us to send the manual instruction.
3. A same table PC allow max 36 cameras display on one screen, so please choose according to your actual needs.



Details and Composition



Monocrystalline silicon
Solar panel



180LM/W high luminous
efficiency LED chip



Long service life and
high-security powerful
lithium battery



The latest upgraded
optical polarized light
integrated lens



Independently developed
intelligent MPPT controller



Die-cast aluminum
integrated molding

Mono-crystalline silicon solar panel

1. overall quality control on solar panels by self-production
2. strictly controlled production process,cells in perfect color consistency, neatly arranged without debris
3. Up to 21% Photoelectric conversion efficiency

LED Source

1. USA Bridgelux LED Source
2. 130-150LM / W whole light efficiency
3. Optical polarized light integrated lens,Bat wing shape light distribution, high transmittance

MPPT Controller

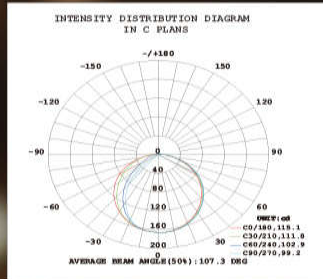
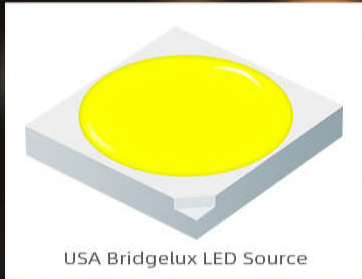
1. APP control function
2. patent technology and Professional Independent R & D
3. More than 90% charging efficiency

Lithium battery

1. Car-grade Lithium battery,High security,High temperature resistance,No explosion,No leakage
2. overall quality control on battery by self-production
3. Long service life,Overcharge and deep discharge protect,More than 1500 times cycles.

LED Source

130-150LM / W whole light efficiency



Lithium battery

Long service life (Overcharge and deep discharge protection, More than 1500 times cycles)



Car-grade Lithium battery. High security (High temperature resistance, No explosion, No leakage)



overall quality control on battery by self-production

MPPT Controller

More than 90% charging efficiency



Mono-crystalline silicon solar panel

Up to 21% Photoelectric conversion efficiency



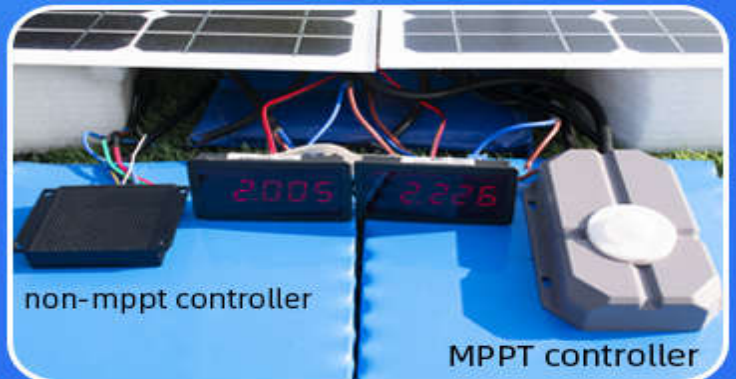
Overall quality control on solar panels by self-production



Strictly controlled production process (cells in perfect color consistency, neatly arranged without debris or spot)



patent technology and Professional Independent R & D



non-mppt controller

MPPT controller

The charging efficiency of MPPT controller is up to 10%-15% higher than that of non-mppt controller

Electrical Characteristic					
Rated Power	30W	40W	50W	60W	80W
Solar Panel Power	18V/45W	18V/55W	18V/65W	18V/75W	18V/85W
Battery Capacity	12V/23AH	12V/29AH	12V/31AH	12V/36AH	12V/47AH
Charge Time	6-8H				
Discharge Time	>36H				
Operating Temperature	-25℃ ~ +65℃				
LED Parameters					
LED Beads	5050				
Lumen Flux (LM)	3500-5000	4500-6000	5500-7000	6500-8000	8500-10000
Light Distribution	Batwing Type				
Color Temperature	2800K-6500K				
Mechanical Specification					
Light Body Size(CM)	92.5*36*27	110.5*36*27	125*36*27	143*36*27	157.5*36*27
Installation Height(M)	4-6	5-7	6-8	7-9	8-10
Pole Install Distance(M)	12-18	15-21	18-24	21-27	24-30

CORE SELLING POINT

TOP 1

Self-designed and self-developed, exclusive private mold, super-thin body design of 26mm thickness.



TOP 2

APP control: Completely controlled by bluetooth APP, including turn on/off the light, read the light data and so on.



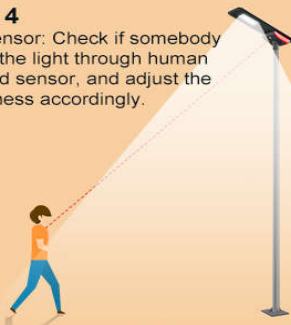
TOP 3

Detachable battery storeroom: Easier to replace the battery or controller, no need to disassemble the light.



TOP 4

PIR sensor: Check if somebody under the light through human infrared sensor, and adjust the brightness accordingly.



TOP 5

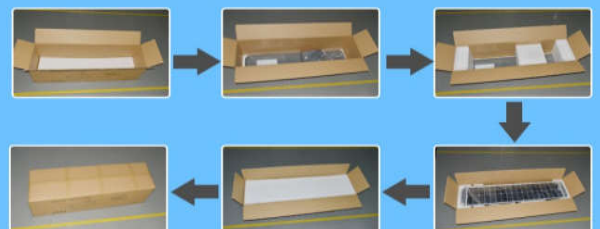
This series of products promises the warranty is 5 years!



IP rating: IP66



Packaging Process



26mm
Thin light body

7. Installation and maintenance

1. Installation

Installation steps as follows,



(1) . Insert the pole into the hat socket



(2). Fasten the 6 screws with tools



(3). Stand the pole upright

- ◆ The inner diameter of the installation sleeve of this product is 81MM, the outer diameter of the pole is recommended to be 67-78MM.
- ◆ When the product is installed, pay attention to avoid the shade, avoid the solar panel cannot be charged or cannot be charged enough with sun.
- ◆ Be sure to tighten the fastening screw.
- ◆ Check and clean solar panels regularly to avoid hot spots

Production equipment



Solar panel cutting machine



Solar panel welding machine



Laminating machine



Photovoltaic module tester



Battery spot welding machine



Shrink packaging machine

Production Process



Incoming Material



Solar Panel Welding



Solar Panel Laminating



Assembling



Testing



Packaging

PRODUCT CERTIFICATES



OEM & ODM

The services we can provide

1. Printing LOGO
2. Painting light housing color
3. Programing indicator light color
4. Designing configuration
5. Changing function
6. Designing outer package
7. Designing new products according to your requirements!

5. Quality Assurance



We provide 5 years of warranty since the date of inspection