

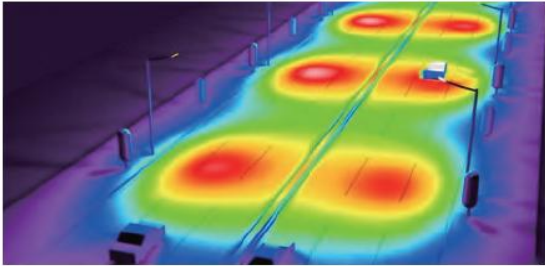


# 120W Solar LED Street Light Specification

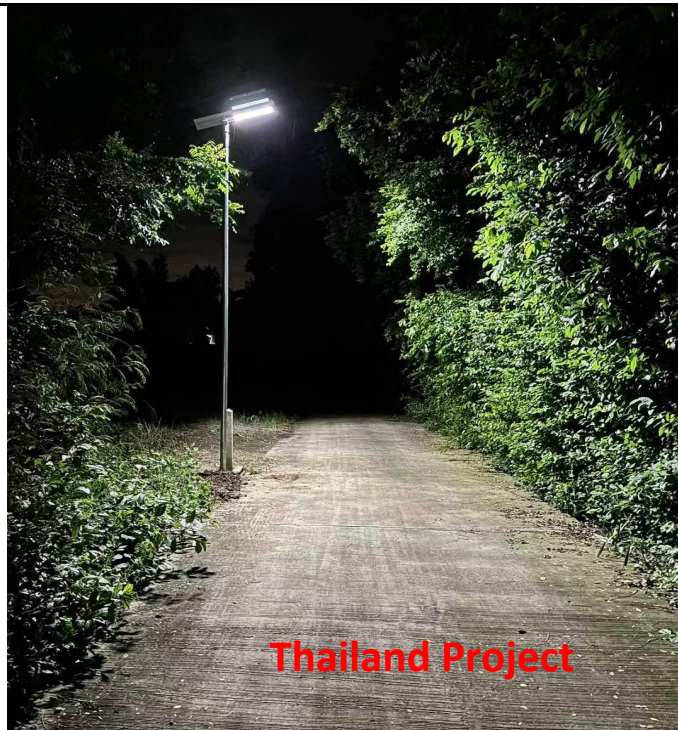
Product Picture	Key Features																																																								
 <p><b>Patent Design</b></p>	<ol style="list-style-type: none"> <li>1. Aluminum Case, Anti-corrosion and Anti-Typhoon.</li> <li>2. Mono solar panel, efficiency &gt; 23%.</li> <li>3. NEW A grade LiFePO4 battery, life cycle &gt; 3,000 cycles.</li> <li>4. One step installation, FREE maintenance.</li> <li>5. MPPT controller, BMS battery system protection.</li> <li>6. FREE DIALux simulation service.</li> <li>7. Provide OEM &amp; ODM solar solution service</li> </ol>																																																								
 <p><b>Mono Solar Panel</b></p>	<table border="1"> <tr> <td>Model No.</td> <td><b>JXL-ISL03-120W</b></td> </tr> <tr> <td>Flux Luminous</td> <td>200lm/w</td> </tr> <tr> <td>100% Power Working</td> <td>&gt; 12 hours</td> </tr> <tr> <td>Super bright LED Chip</td> <td>416pcs</td> </tr> <tr> <td>LED Lifetime</td> <td>&gt; 100,000 hours</td> </tr> <tr> <td>MONO Solar Panel</td> <td><b>9V/120W</b></td> </tr> <tr> <td>Solar Panel Lifetime</td> <td>&gt; 25 years</td> </tr> <tr> <td>Controller</td> <td>MPPT Intelligent Control</td> </tr> <tr> <td>NEW LiFePO4 Battery</td> <td><b>6.4V/100Ah(640Wh)</b></td> </tr> <tr> <td>Battery Life time</td> <td>8-10 years (Life cycle &gt; 3,000 times)</td> </tr> <tr> <td>Light Distribution</td> <td>70° X 140°</td> </tr> <tr> <td>Color Temperature</td> <td>6000K, Ra &gt; 70+</td> </tr> <tr> <td>IP / IK Class</td> <td>IP65 / IK08</td> </tr> <tr> <td>Sensor</td> <td>Light sensor</td> </tr> <tr> <td>Control Model</td> <td>On/off switch</td> </tr> <tr> <td>Working Model</td> <td>Auto-adjusting mode</td> </tr> <tr> <td>Charging Time</td> <td>6-8 Hrs under strong sunshine</td> </tr> <tr> <td>Lighting Time in Rainy Day</td> <td>3-5 Days</td> </tr> <tr> <td>Body Materials</td> <td><b>High-end Aluminium Alloy</b></td> </tr> <tr> <td>Recommended Height</td> <td>9-12 meters</td> </tr> <tr> <td>Recommended Pole Spacing</td> <td>30-35 meters</td> </tr> <tr> <td>Working Temperature</td> <td>-25°C ~ +65°C</td> </tr> <tr> <td>Lamp Arm Adjust Angle</td> <td>0° - 90°</td> </tr> <tr> <td>Installation Method</td> <td>∅ 65-70mm</td> </tr> <tr> <td>Product Size</td> <td>1610*400*217mm</td> </tr> <tr> <td>Carton Size</td> <td>1695*483*195mm</td> </tr> <tr> <td>Net Weight</td> <td>24KG</td> </tr> <tr> <td>Gross Weight</td> <td>25KG</td> </tr> </table>	Model No.	<b>JXL-ISL03-120W</b>	Flux Luminous	200lm/w	100% Power Working	> 12 hours	Super bright LED Chip	416pcs	LED Lifetime	> 100,000 hours	MONO Solar Panel	<b>9V/120W</b>	Solar Panel Lifetime	> 25 years	Controller	MPPT Intelligent Control	NEW LiFePO4 Battery	<b>6.4V/100Ah(640Wh)</b>	Battery Life time	8-10 years (Life cycle > 3,000 times)	Light Distribution	70° X 140°	Color Temperature	6000K, Ra > 70+	IP / IK Class	IP65 / IK08	Sensor	Light sensor	Control Model	On/off switch	Working Model	Auto-adjusting mode	Charging Time	6-8 Hrs under strong sunshine	Lighting Time in Rainy Day	3-5 Days	Body Materials	<b>High-end Aluminium Alloy</b>	Recommended Height	9-12 meters	Recommended Pole Spacing	30-35 meters	Working Temperature	-25°C ~ +65°C	Lamp Arm Adjust Angle	0° - 90°	Installation Method	∅ 65-70mm	Product Size	1610*400*217mm	Carton Size	1695*483*195mm	Net Weight	24KG	Gross Weight	25KG
Model No.	<b>JXL-ISL03-120W</b>																																																								
Flux Luminous	200lm/w																																																								
100% Power Working	> 12 hours																																																								
Super bright LED Chip	416pcs																																																								
LED Lifetime	> 100,000 hours																																																								
MONO Solar Panel	<b>9V/120W</b>																																																								
Solar Panel Lifetime	> 25 years																																																								
Controller	MPPT Intelligent Control																																																								
NEW LiFePO4 Battery	<b>6.4V/100Ah(640Wh)</b>																																																								
Battery Life time	8-10 years (Life cycle > 3,000 times)																																																								
Light Distribution	70° X 140°																																																								
Color Temperature	6000K, Ra > 70+																																																								
IP / IK Class	IP65 / IK08																																																								
Sensor	Light sensor																																																								
Control Model	On/off switch																																																								
Working Model	Auto-adjusting mode																																																								
Charging Time	6-8 Hrs under strong sunshine																																																								
Lighting Time in Rainy Day	3-5 Days																																																								
Body Materials	<b>High-end Aluminium Alloy</b>																																																								
Recommended Height	9-12 meters																																																								
Recommended Pole Spacing	30-35 meters																																																								
Working Temperature	-25°C ~ +65°C																																																								
Lamp Arm Adjust Angle	0° - 90°																																																								
Installation Method	∅ 65-70mm																																																								
Product Size	1610*400*217mm																																																								
Carton Size	1695*483*195mm																																																								
Net Weight	24KG																																																								
Gross Weight	25KG																																																								
 <p><b>DIALux Simulation</b></p>	<table border="1"> <tr> <td><b>Warranty</b></td> <td><b>3 years</b></td> </tr> <tr> <td>Certificate</td> <td>ISO, CE, RoHS, IP65, IES, MSDS</td> </tr> </table>	<b>Warranty</b>	<b>3 years</b>	Certificate	ISO, CE, RoHS, IP65, IES, MSDS																																																				
<b>Warranty</b>	<b>3 years</b>																																																								
Certificate	ISO, CE, RoHS, IP65, IES, MSDS																																																								
<p><b>Currently over 400,000 lighting fixtures installed in over 60 countries over the last few years</b></p>																																																									

TYPE II: Suitable for general road lighting needs, such as rural road, urban branch road, residential areas etc.

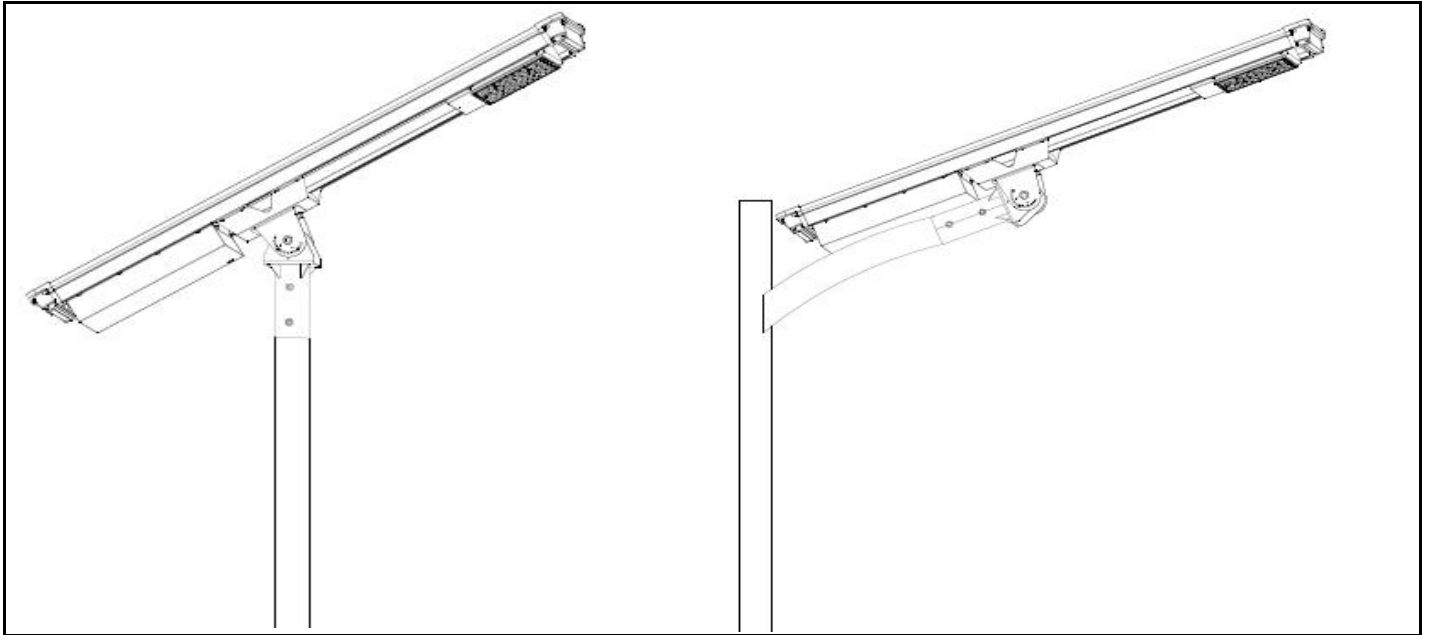
## Key Features



## Projects Share



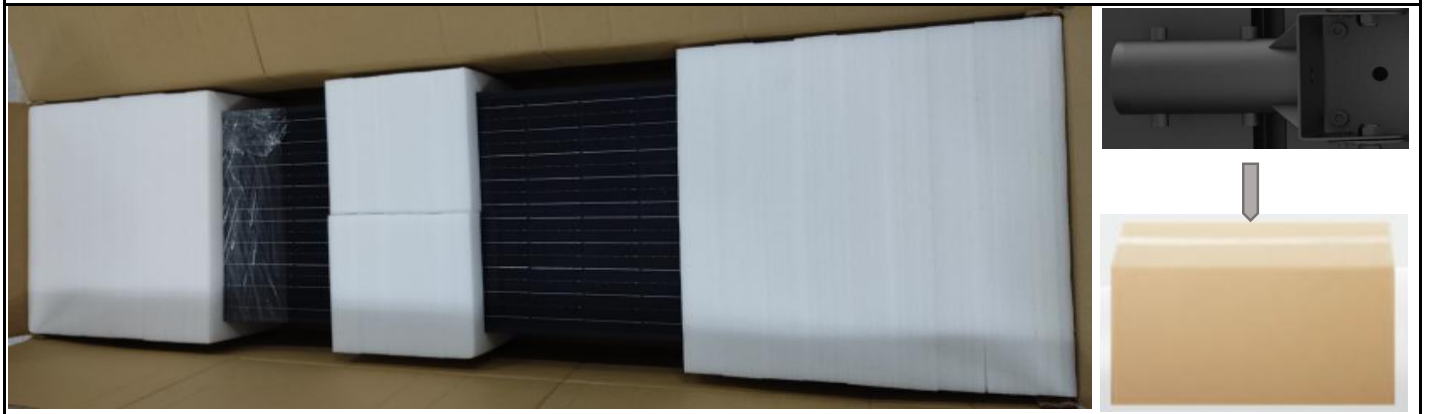
## Installation



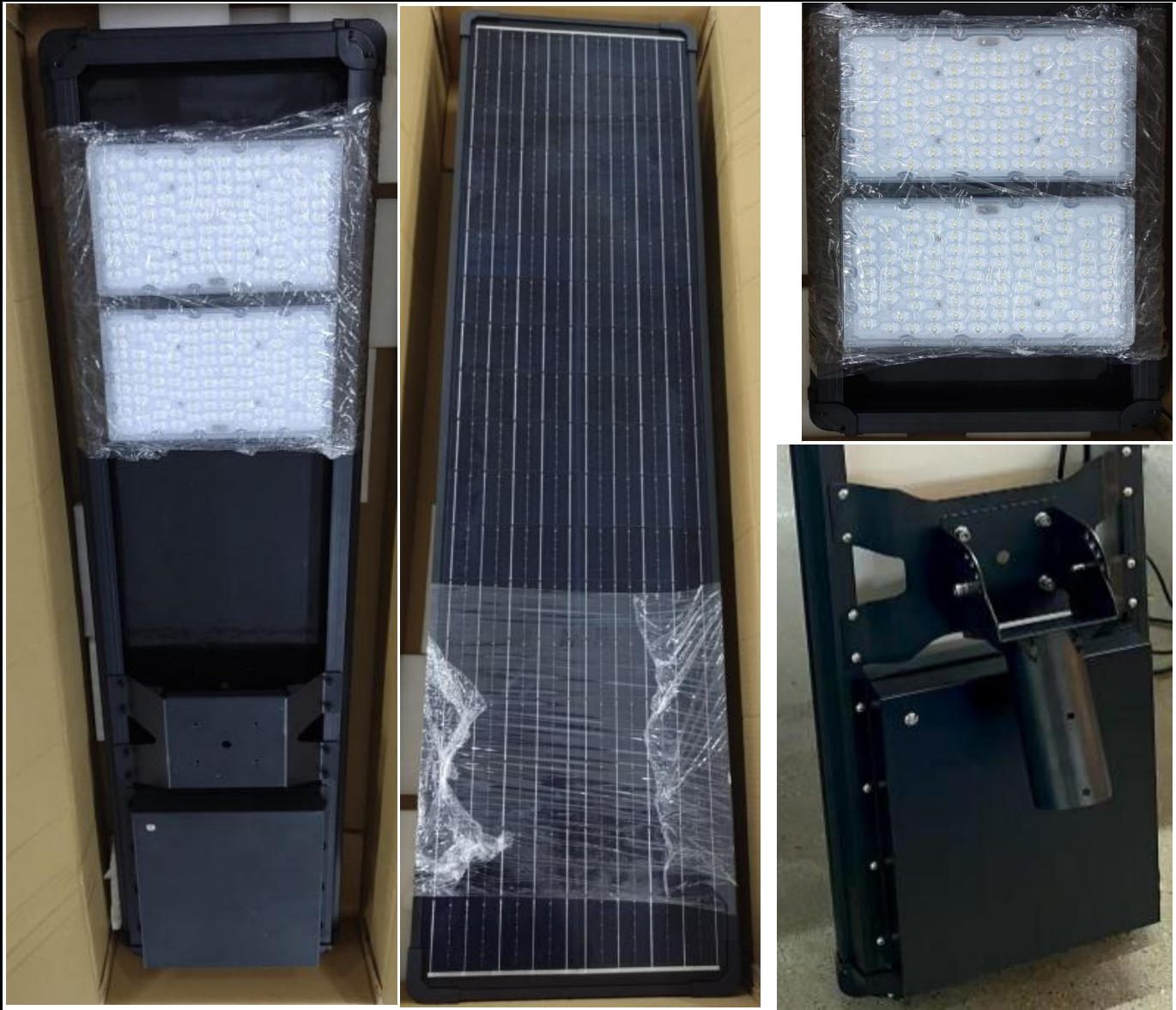
**Projects Pictures**



**Carton Box Packing**



Real Product Pictures



Factory Show Room

